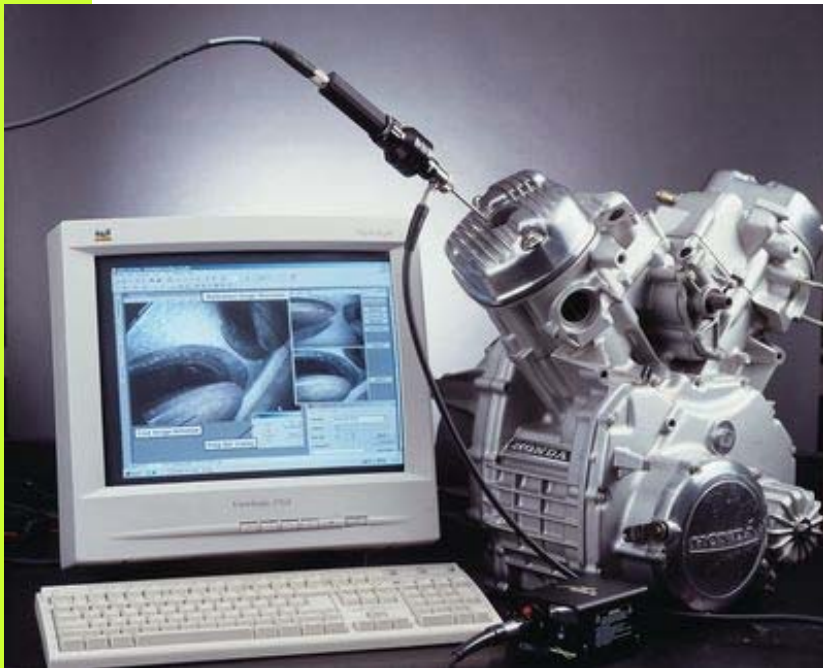
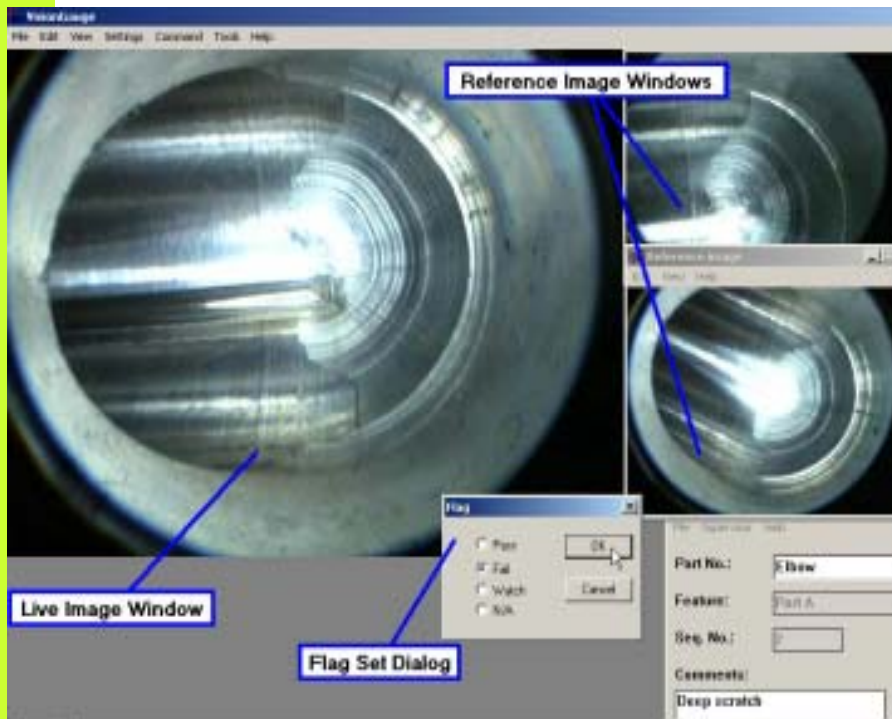


VOCAL – Video Inspection Software



- Establish and document inspection procedures in support of ISO 9000 series requirements.
- Update inspectors, vendors and customers of changes or corrective actions as they occur.
- Train inspectors using standard images with descriptive annotations.

VOCAL – Key Benefits



- Establish Procedures
- Document Procedures
- Document Inspections
- Train Inspectors
- Share Images On-line
- E-mail Images
- Archive Images

VOCAL Software

- VOCAL software is unique in the industry in letting you **establish** and **document** borescope inspection procedures in support of ISO 9000 series requirements.
- QC Managers build a library of reference images for each feature of each part to be inspected.
- Selected reference images are viewed along with the **live image** during inspection leading to consistent inspection results and shorter training times.
- If inspection criteria change, updating the VOCAL reference images communicates this to inspectors.

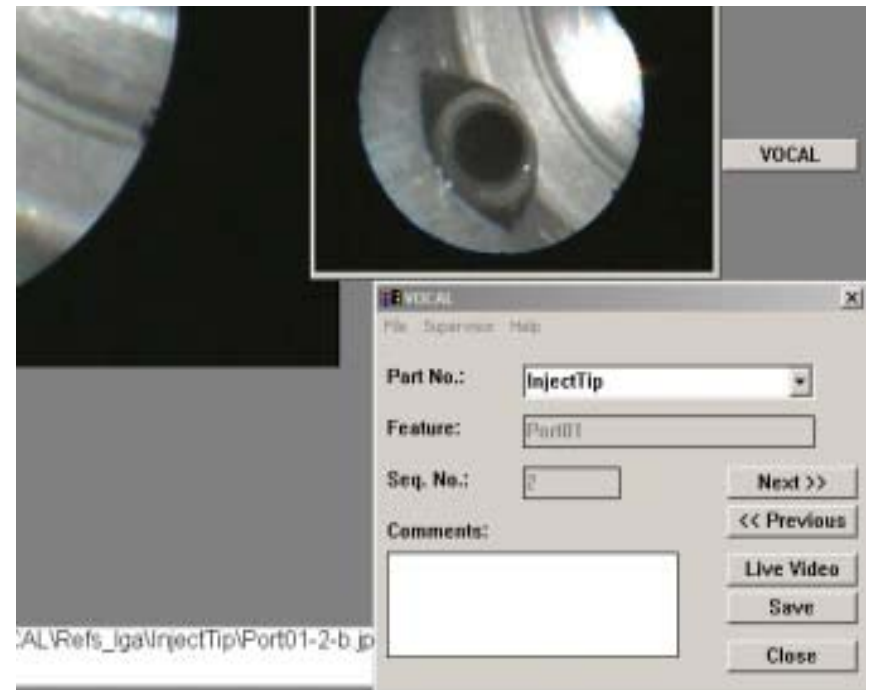
VOCAL – Inspector View



- Inspector views live image on computer monitor.
- Inspector also views annotated reference images for comparison.
- Reference images can be annotated to indicate key features or criteria.

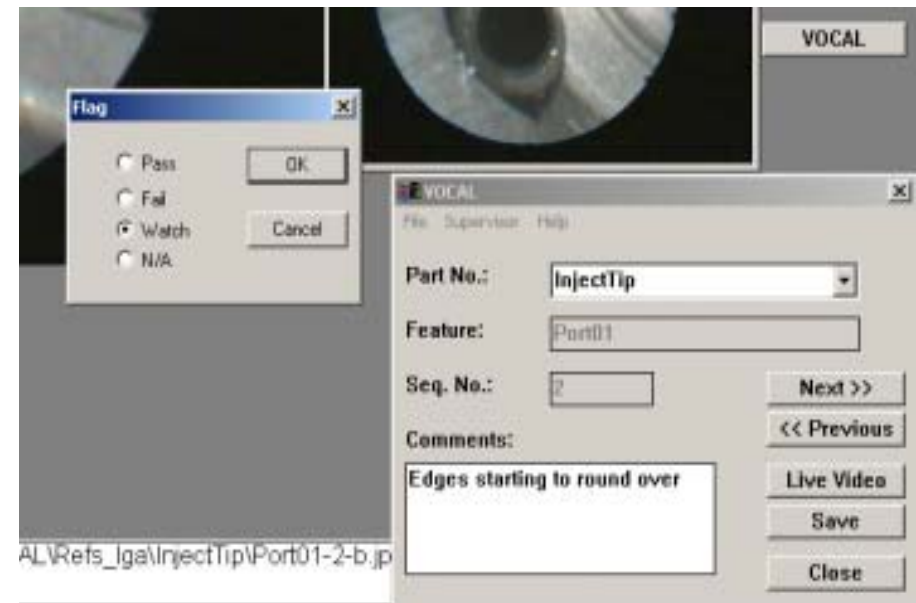
VOCAL – Dialog Box

- The VOCAL dialog box presents the operator with simple controls.
- **Next>>** and **<<Previous** feature buttons step through inspection.
- **Save** adds image to a web readable table along with operator comments.



VOCAL – Pass / Fail Flags

- During an image save, the operator chooses a **Flag** to save along with the image.
- The **Flag** names and labels in the VOCAL dialog box are user definable to match your shop terms.

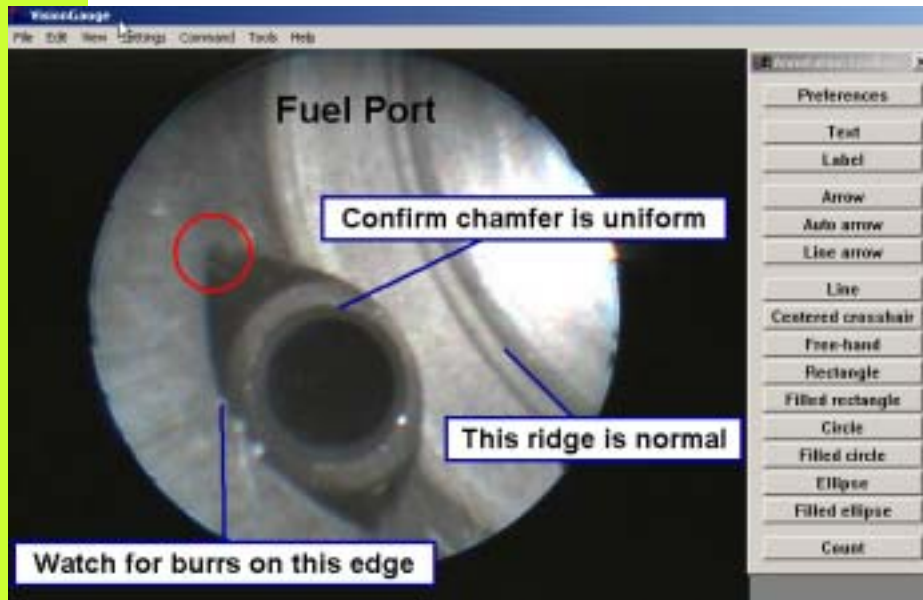


VOCAL – Network Readable Index

- Saved images are added to an image table along with comment, flag, time-stamp and other ID information.
- Anyone on the network with read access to the “Saved Image” folder can view the table and images in a web browser.

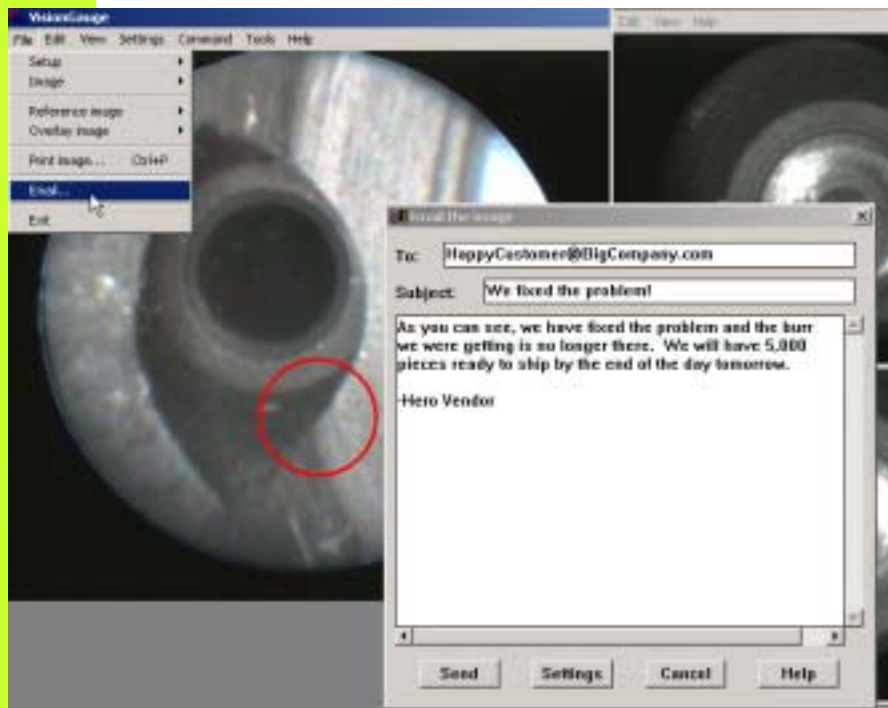
Status ID	Operator	Date	Time	Part No.	Feature	No.	Image File Name	Flag	Comment
STA00	atkins	20021125	10:33:44	one	Thread - hole#1	4	oneThread - hole#1 20021125101344.jpg	Watch	This is a comment on Thread - hole#1. Taken by today by Leady.
STA00	atkins	20021125	10:31:38	one	Thread - hole#1	4	oneThread - hole#1 20021125103138.jpg	Watch	This is a comment on Thread - hole#1. Taken by today by Leady.
STA00	atkins	20021125	10:31:47	one	Thread - hole#1	4	oneThread - hole#1 20021125103147.jpg	Fail	This is a comment on Thread - hole#1. Taken by today by Leady.
STA00	atkins	20021125	10:32:48	one	Feature 1	3	oneFeature 1 20021125103248.jpg	Pass	
STA00	atkins	20021125	11:40:32	Landy#1	Feature 2	2	Landy#1 Feature 20021125114032.jpg	N/A	
STA00	atkins	20021125	11:40:52	Landy#1	Feature 2	2	Landy#1 Feature 20021125114052.jpg	N/A	VoiceChange splash screen.
STA00	atkins	20021125	12:29:43	one	Thread - hole 1	4	oneThread - hole 1 20021125122943.jpg	Fail	
STA00	atkins	20021125	14:6:3	one	Thread - hole 2	5	oneThread - hole 20021125140603.jpg	N/A	What is going on with this?
STA00	atkins	20021207	11:31:40	Flower 2	Port A	3	Flower 2 Port A 20021207113140.jpg	Watch	Are the pots on right ok?
STA00	atkins	20021207	11:41:38	Flower 2	Port B	7	Flower 2 Port B 20021207114138.jpg	Watch	

VOCAL – Annotate Images



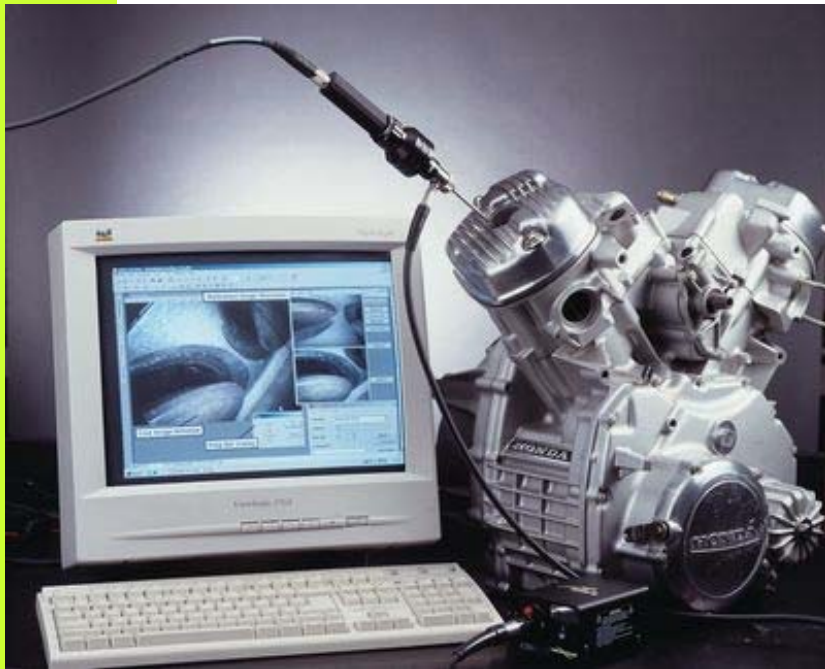
- Images can be annotated using the Annotation Toolbox which provides a wide array of options.
- Shown here are **Text**, **Labels** and **Circle**.
- Colors, fonts and line widths are all user selectable.

VOCAL – Send images via E-mail



- Built-in E-mail capability let's you attach images and send E-mail without ever leaving VOCAL.
- Keep inspectors, vendors and customers informed of production status.
- Prove to customers / regulators that corrective action has been taken.

VOCAL - Video Inspection Software



- Establish and document inspection procedures in support of ISO 9000 series requirements.
- Update inspectors, vendors and customers of changes or corrective actions as they occur.
- Train inspectors using standard images with descriptive annotations.